

# MECHANO HYBRID

Mitsui Ultra High Speed Mixer

High Dispersion and Surface Treatment with 100m/s Blade Speed and Spherical Shape



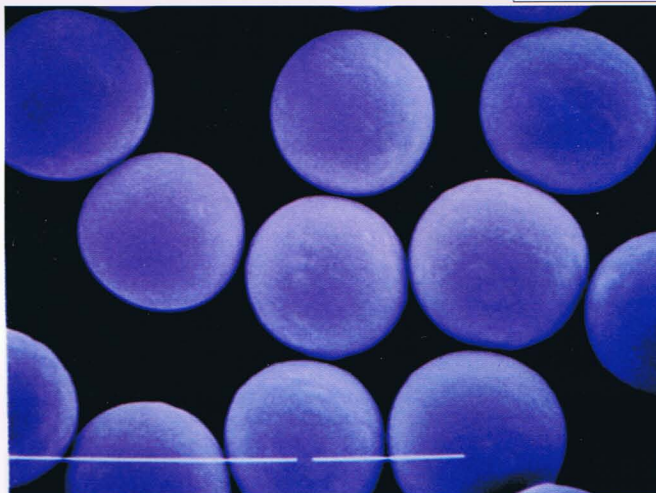
 **MITSUI MINING CO., LTD.**

## MECHANO HYBRID

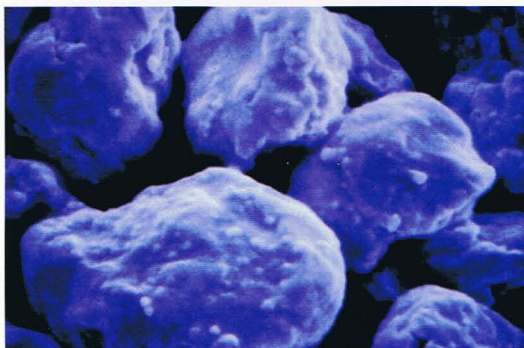
The market is seeking for High quality treatment product. Consequently, the needs for the Mixer to have faster revolution are getting high. Up to now, so-called high speed mixer can only reach velocity of approx. 20~40m/s at the tip of the blade. However, MECHANO HYBRID can reach 100m/s as well as accelerating convection current inside the spherical mixing tank which enables high level dispersion, surface treatment and coating than ever before.

## FEATURES

- ① Ultra High Speed: Unparalleled to other mixer, blade revolution reaching 100m/s make possible to give the material high pulverizing and impact force.
- ② Spherical Mixing Tank: By making the tank spherical, accelerated convection current under high speed will also have better Heat Conduction in addition to self cleaning effect.
- ③ Variable Impeller Selection: There are two types of impeller. One of which is built for pulverizing purpose and other one is for impact force to correspond to your needs. Water can also run through the blade.

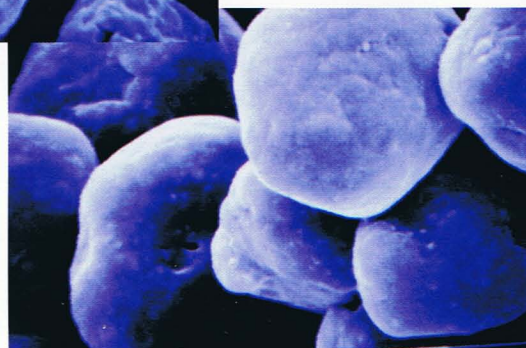


Capsulate



Semi-finished Toner

↓  
Surface Spherical Treatment



## TREATMENT PURPOSE

High dispersion and Pulverizing for Pigments. Particle coating and capsulate. Surface additive treatment and spherical treatment for Toner. And many more...

## 〈MECHANO HYBRID〉 STANDARD SPECIFICATION

Model	Total capacity [ℓ]	Treating capacity [ℓ]	Motor output [kw]	Discharge valve	Length L [mm]	Width W [mm]	Height H [mm]	Weight [kg]
MH20	20	12	5.5	Hand-operated	1100	675	1390	300
MH40	40	24	11	Hand-operated	1400	850	1700	500
MH75	75	50	22	Air-operated	1900	1000	1800	1000
MH150	160	105	45	Air-operated	2400	1150	2000	1500
MH300	340	225	90	Air-operated	3000	1400	2500	2500
MH600	630	420	190	Air-operated	3700	1700	3000	4500

• We have wealth of treatment know-how. Please feel free to contact us for any treatment process.

• We have MH20, MH150 as a test machine at Tochigi R&D Centre. Please feel to contact our agents.



# MITSUI MINING CO., LTD.

Chemical Business Sector

3-3 Toyosu, 3-chome,  
Koto-ku, Tokyo 135-6007  
Japan  
Tel. ++81-(0)3-5560-2906  
Fax. ++81-(0)3-5560-2913

三 亞 通 商 株 式 会 社

本 社 東京都台東区東上野4丁目10番5号下條ビル  
電 話 (03)3844-1771 ファックス (03)3843-7847  
大 阪 大阪府大阪市淀川区西宮原3丁目3番  
ファミールハイツ北大阪3号棟 307号室  
電 話 (06)6396-6087 ファックス (06)6399-4588

SAN A TSUSHO CO., LTD.

SHIMOJO BLDG., 4-10-5, HIGASHIUENO,  
TAITO-KU, TOKYO, 110-0015 JAPAN  
TEL: +81-3-3844-1771 FAX: +81-3-3843-7847  
E-MAIL: info@san-a-tsusho.co.jp