

ASADA Oblong Opening Mesh



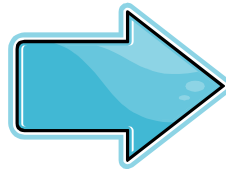
Leading Manufacturer of Stainless Steel Wire Mesh



Oblong Opening Mesh

Users

Opening (μ m)	Mesh Count mesh	Wire Dia. (mm)	Opening Rate (%)
25 x 32	500 x 445	0.025	28.1%
25 x 36	500 x 416	0.025	29.5%
25 x 40	500 x 392	0.025	30.8%
34 x 58	400 x 289	0.030	35.0%
45 x 53	330 x 300	0.032	36.4%
45 x 72	330 x 244	0.032	40.5%

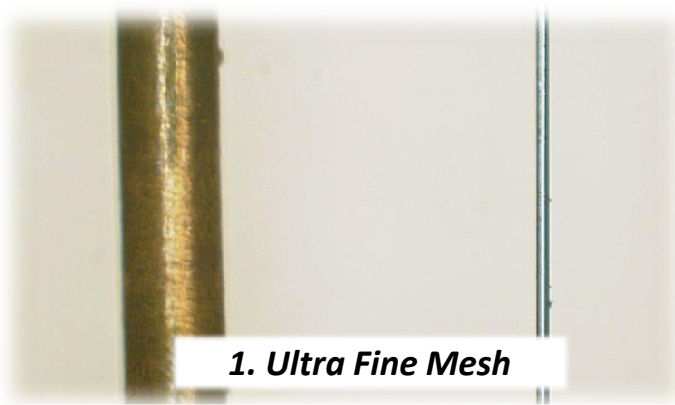


Solder Manufactures

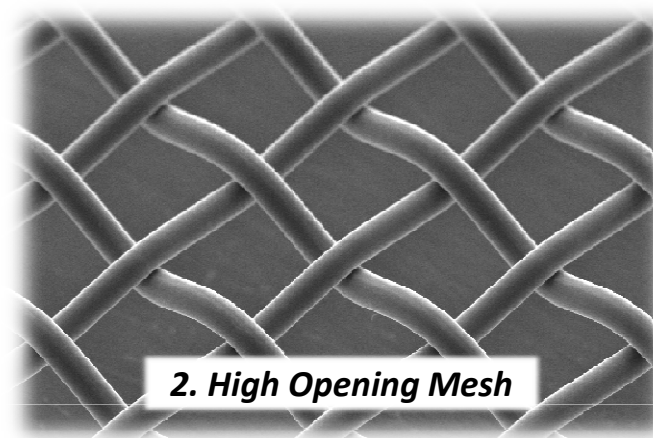
Carrier Manufactures



*These are 5 unique and valuable products
that only ASADA can produce!!*



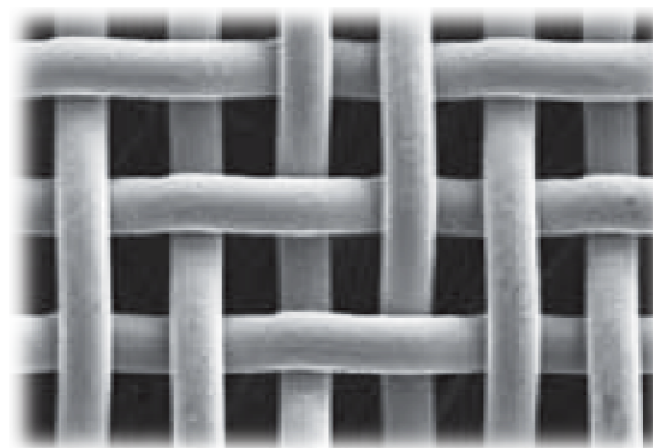
1. Ultra Fine Mesh



2. High Opening Mesh



3. Excellent Accuracy



4. Oblong Mesh