

Sounding-V

SOUNDING-V

Compact type level meter for powder storage level up to 20m.

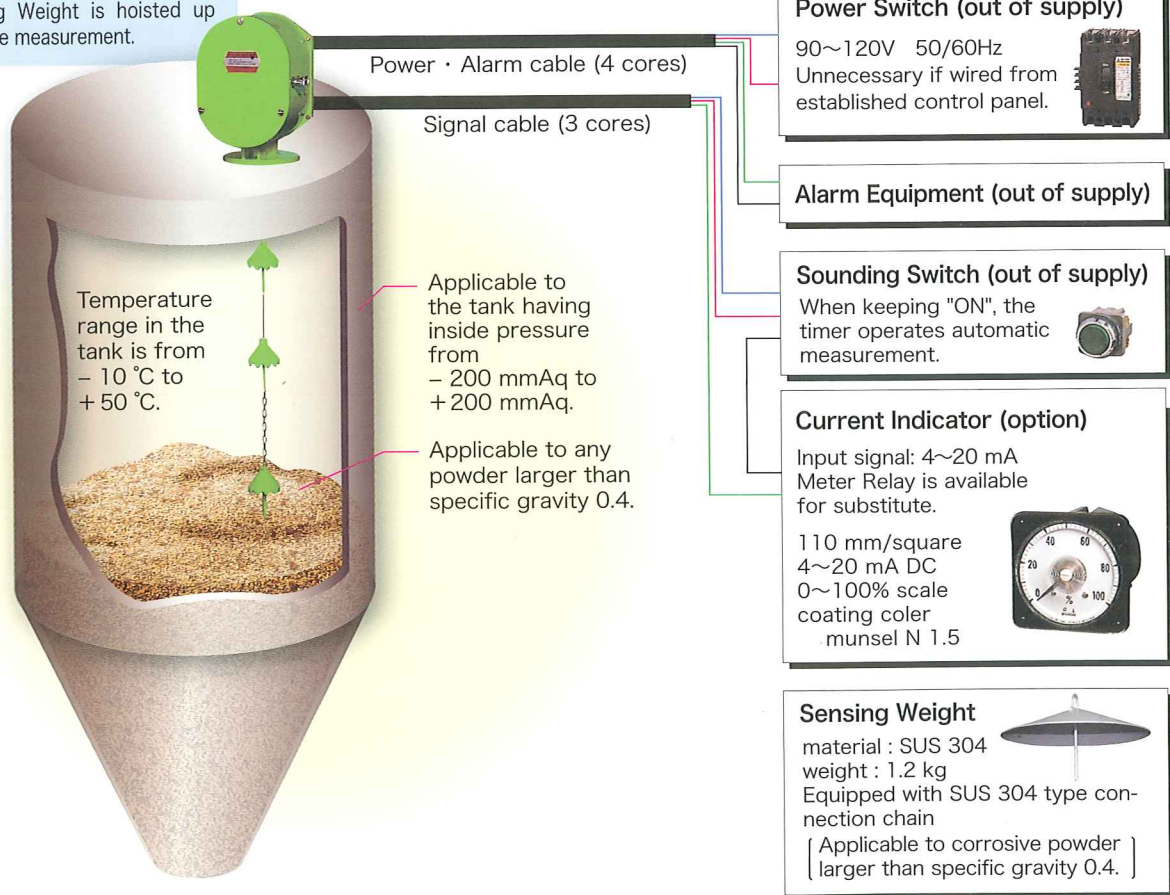


Precisely measures the storage level in powder

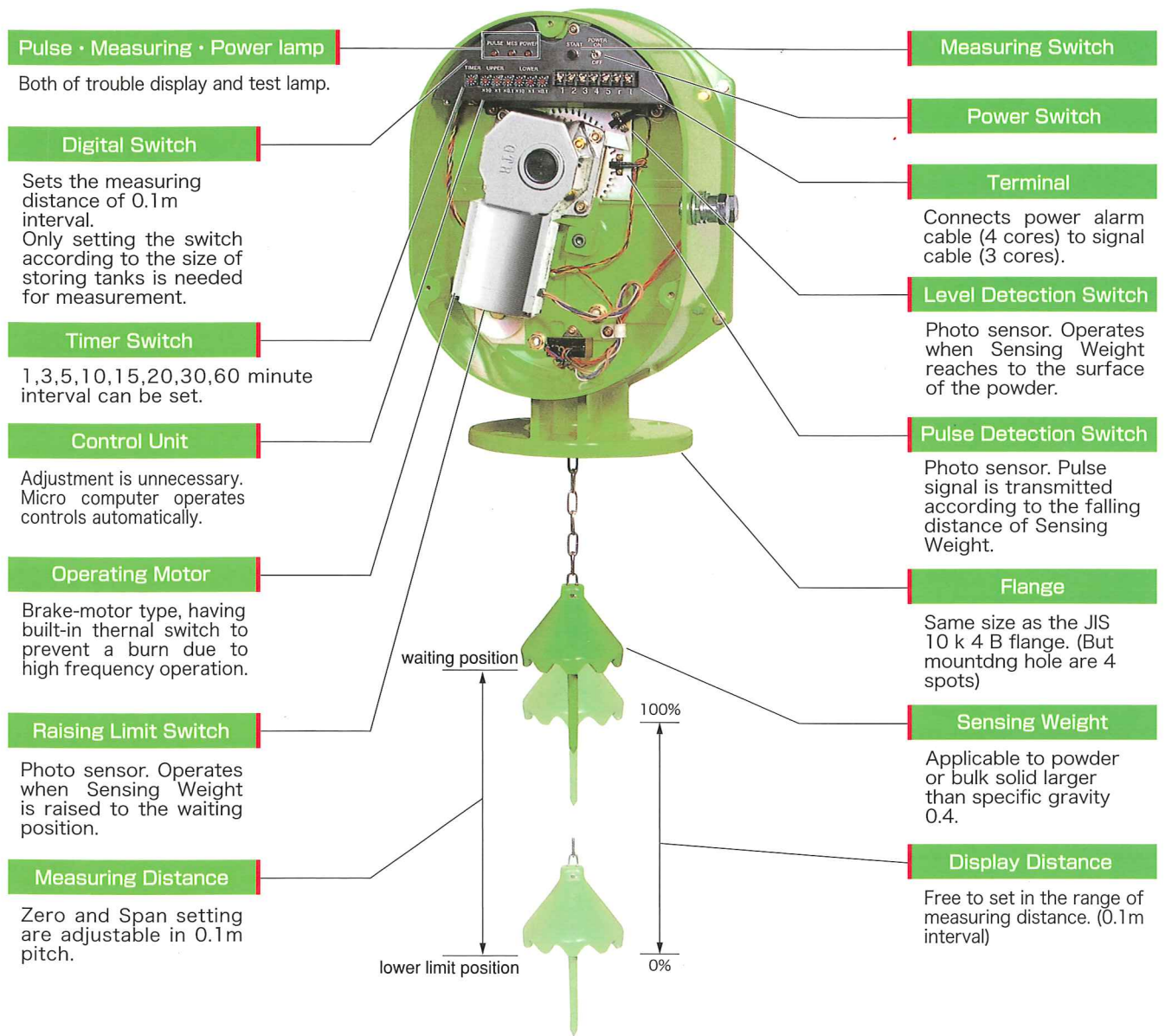
- **Anyone can use it easily** ————— Only set switch to measure storage level.
- **Adjustment is unnecessary** ————— It is controlled automatically by micro computer.
- **Auto-operation of storage tank by one Sounding V unit is possible** — Outputs the measured value by 4~20mA signal.
- **It can measure the powder level correctly** — Guaranteed accuracy within 1%(from 2 m to 20 m).
- **Automatic measurement is also available** — It is equipped with an 8 step switching timer from 1 to 60 minutes.
- **Durability is excellent** ————— Casing and the main parts are of FRP resin.
- **Installation is easy** ————— Only mount on the JIS 10 k 4 B flange to complete installation.
- **Countermeasures to problems are perfect** — If trouble occurs, an alarm signal is outputted immediately.
- **Power is AC 100V** ————— Worked by single phase power (both 50/60 Hz) (power consumption 30 VA).

Sounding V

Sensing Weight is hoisted down in the storage tank to measure the powder level. The Sensing Weight is hoisted up just after the measurement.



r silo or tank and displays in remote indication.

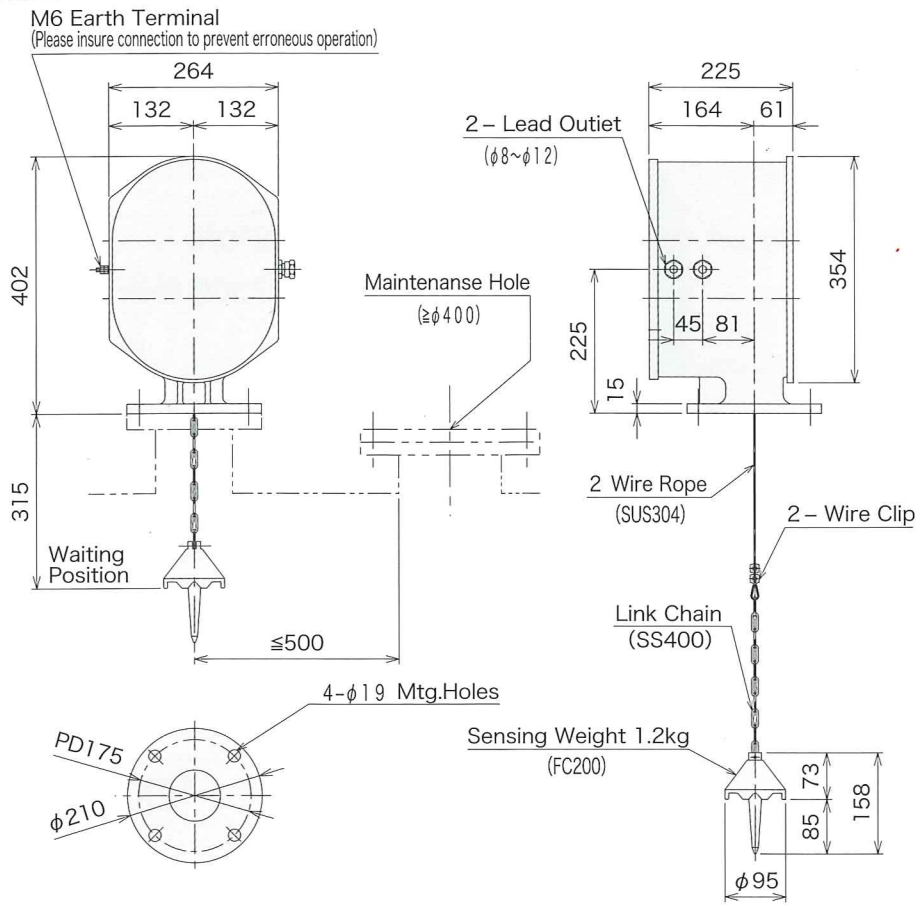


Standard Specification

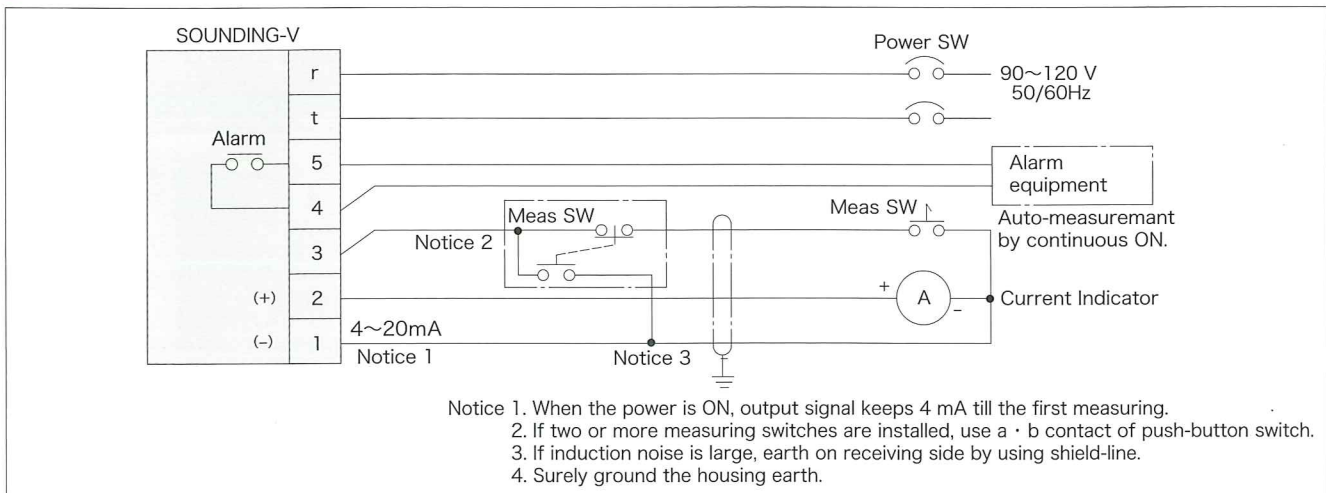
Type	MDVC-2S2 type
Wire rope	2 mm 7×7 ropes (strength 358 kg)
Measuring distance	0~20 m
Measuring accuracy	1% F.S. of
Output signal	DC4 ~ 20 m A load resistance : 350 Ω or less
Traveling speed	8.8 /10.5m/min(50/60Hz)
Measuring signal	One measurement by instantaneous ON(above 0.1 sec) Auto measurement with internal timer by continuous ON
Automatic Measuring	1,3,5,10,15,20,30,60min intervals
Measuring frequency	Max. 50 % ED(Continuous measurement is possible when the measuring time is equal to or less than the pausing time.)
Alarm	Alarm contact turns ON when rope is cut and motor is over loaded.

Sensing Weight	1.2 kg (Volume gravity of object is more than 0.4)
Operating motor (25W)	All closing form condenser motor, E-type isolation, permanent brake, special rank thermal protector built in (return itself type)
Main parts materials	exterior, flange, drum : FRP resin wire rope : SUS 304 sounding lead : FG 20 sounding lead chain : SS 41 drum axis, pulley axis : S 35 C·S 15 C roll top detection lever : SS 41 P
Power Source	90—120 V 50/60Hz(30 VA)
Ambient temperature	-10 °C ~ + 50 °C
Protection	IP 55 against pressure case ± 200mmAq
Coating color	Munsell 7.5GY6/10
Weight	12kg (included Sensing Weight)

Dimension Diagram in mm



Connection Diagram



CAUTION

⚠

- For proper and safety use of the product, read thoroughly the instruction manual before using.
- Consult with our representatives where there is a possibility to apply the product to such system that requires safety directly relating to human body.

Specifications are subject to change without notice.
All Rights Reserved Copyright ©2010, Matsushima Machinery Laboratory Co., Ltd.

MATSUSHIMA MACHINERY LABORATORY CO., LTD.



HEAD SALES OFFICE / FACTORY
461 Norimatsu, Yahatanishi-ku, Kitakyushu, 807-0831, Japan
Tel: 81-93-691-3731 Fax: 81-93-691-3735

TOKYO SALES OFFICE
Hohmest Funabashi Bldg., 3-36-28 Honcho, Funabashi, Chiba, 273-0005, Japan
Tel: 81-47-424-9901 Fax: 81-47-424-9905

NAGOYA SALES OFFICE
Tokiwasotodoi Bldg., 9-14 Sotodoicho, Atsuta-ku, Nagoya, 456-0013, Japan
Tel: 81-52-679-6301 Fax: 81-52-679-6305

OSAKA SALES OFFICE
Daihatsu Bldg., 2-2-40 Katamachi, Mlyakojima-ku, Osaka, 534-0025, Japan
Tel: 81-6-6352-8011 Fax: 81-6-6352-8012

http://www.matusima.co.jp E-mail: info@matusima.co.jp