

Relay Knocker

Relay piping function allows operation of multiple knockers by one valve.
See page 6, "Control method"



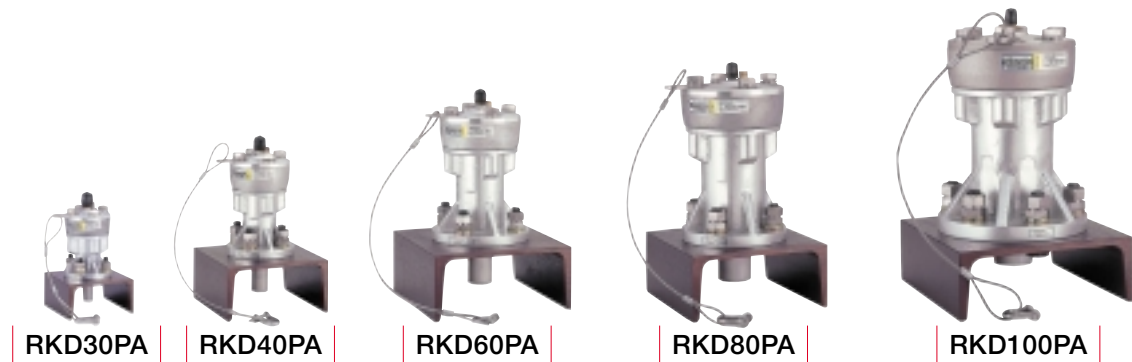
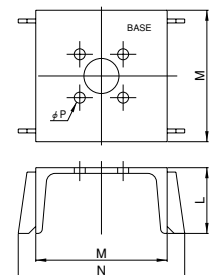
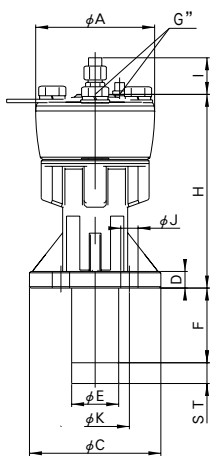
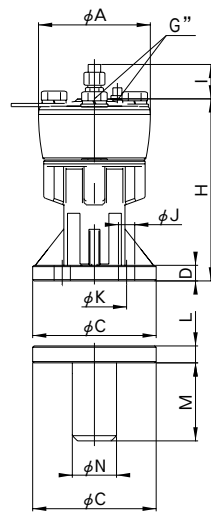
SPECIFICATIONS

Model	Working Pressure (MPa)	Stroke Cycle (time/min)	Air Consumption (NL/time)	Stroke Energy (N·m)	Impulsive Force		Weight* (kg)
					(kg·m/s)	Converts into hammer	
RKV30PA	0.3—0.7	1—60	0.05—0.13	5.49— 13.1	1.70— 2.60	below 1.0 lb	1.3
RKV40PA			0.15—0.37	9.22— 22.3	2.86— 4.42	1.0— 1.5 lbs	3.4
RKV60PA			0.33—0.77	20.60— 49.0	6.80—10.50	1.5— 3.0 lbs	8.8
RKV80PA			0.60—1.40	45.10—109.0	15.00—23.30	3.0— 8.0 lbs	13.7
RKV100PA			0.98—2.28	82.40—201.0	28.70—44.50	6.0—15.0 lbs	30.8

*Weight includes base.

DIMENSIONS CHART (mm)

Model	φ A	φ C	D	G"	H	I	φ J	φ K	L	M	φ N
RKV30PA	66	70	8	1/8	95	(25)	8.5	55	8	35	27.2
RKV40PA	86	95	12		140		12.5	70	13	60	34.0
RKV60PA	115	138	14		183		14.5	110	15	80	76.3
RKV80PA	146	148	16	1/4	222	(28)	17.0	120	18	90	114.3
RKV100PA	175	208	20		270		21.0	170	23	115	



SPECIFICATIONS

Model	Working Pressure (MPa)	Stroke Cycle (time/min)	Air Consumption (NL/time)	Stroke Energy (N·m)	Impulsive Force		Weight* (kg)
					(kg·m/s)	Converts into hammer	
RKD30PA	0.3—0.7	1—60	0.05—0.13	5.49— 13.1	1.70— 2.60	below 1.0 lb	1.9
RKD40PA			0.15—0.37	9.22— 22.3	2.86— 4.42	1.0— 1.5 lbs	5.4
RKD60PA			0.33—0.77	20.60— 49.0	6.80—10.50	1.5— 3.0 lbs	12.7
RKD80PA			0.60—1.40	45.10—109.0	15.00—23.30	3.0— 8.0 lbs	17.7
RKD100PA			0.98—2.28	82.40—201.0	28.70—44.50	6.0—15.0 lbs	34.1

*Weight includes base.

DIMENSIONS CHART (mm)

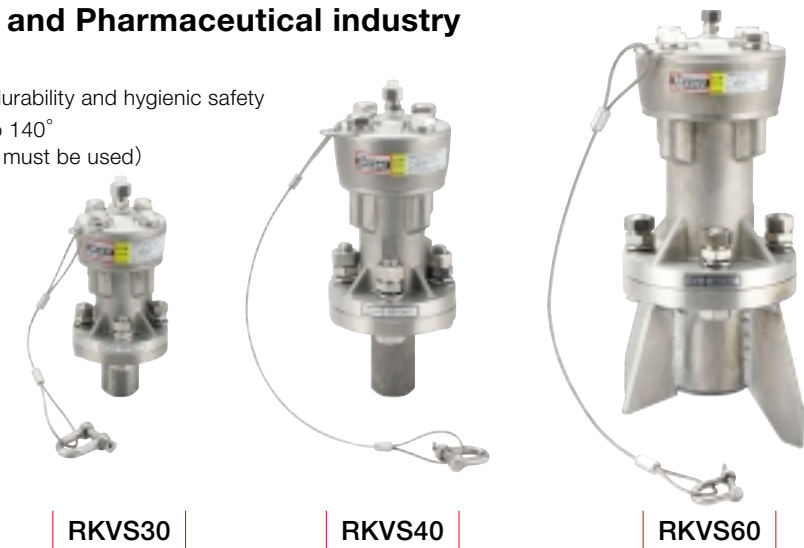
Model	φ A	φ C	D	φ E	F	G"	H	I	φ J	φ K	ST	L	M	N	φ P
RKV30PA	66	70	8	15.0	38	1/8	95	(25)	8.5	55	17	50	100	(140)	4— 8.5
RKV40PA	86	95	12	23.5	55		140		12.5	70	25	75	150	(190)	4—12.5
RKV60PA	115	138	14	35.0	65		183		14.5	110	35	90	200	(330)	4—15.0
RKV80PA	146	148	16	47.5	60	222	17.0	120	40	250	(410)		4—17.0		
RKV100PA	175	208	20	54.5	50	270	21.0	170	50				6—21.0		

Stainless Steel Knocker

For Food, Chemistry, and Pharmaceutical industry

Features

- a. Anticorrosion body to increase durability and hygienic safety
- b. Heat resistance: Maximum up to 140°
(Note: Heat resistance coupling must be used)



SPECIFICATIONS

Model	Working Pressure (MPa)	Stroke Cycle (time/min)	Air Consumption (NL/time)	Stroke Energy (N·m)	Impulsive Force		Weight* (kg)
					(kg·m/s)	Converts into hammer	
RKVS30	0.3—0.7	1—60	0.05—0.13	5.49—13.1	1.70— 2.60	below 1.0 lb	1.7
RKVS40			0.15—0.37	9.22—22.3	2.86— 4.42	1.0— 1.5 lbs	4.3
RKVS60			0.33—0.77	20.6—49.0	6.80—10.5	1.5—3.0 lbs	10.6

*Weight includes base.

Note: Dimensions of stainless steel knockers are the same as these of RKV knockers. Please refer to the chart of page3.

Control panel for Air Knocker



SPECIFICATIONS

Model	Installation Scope	Power supply	Working Pressure (MPa)	Working Fluid Temperature (°C)	Working Times Per/min.	Dimensions (L×W×H) (mm)	Weight (kg)
AOC-1B	Indoor,Outdoor	Air control	0.3—0.7	5—50	12—60	171×67×200	1.3

Model	Installation Scope	Protection class	Input Voltage	Timer setup period	Number of units can be operated	Dimensions (L×W×H) (mm)	Weight (kg)
HSE1100	Indoor	IP2X	100V Single phase	On timer:0.5sec.—100hrs.	10 sets when using solenoid valve AG44—02—3	264×175×250	5.0
HSE1200			200V Single phase	Off timer:0.5sec.—100hrs.			

SPECIFICATIONS

Model	Installation Scope	Protection class	Input Voltage	Power consumption (W)	Timer setup period	Working Pressure (Mpa)	Number of units can be operated	Dimensions (L×W×H) (mm)	Weight (kg)
HKE1100	Indoor	IP2X	100V Single phase	16W	On timer:1sec.—6hrs. Off timer:1sec.—6hrs.	0.3—0.7	RKV/D/S30PA 8sets	264×173×400	7.0
HKE1200			200V Single phase				RKV/D/S40PA 6sets		
HKE5100	Indoor, Outdoor	IP44	100V Single phase	16W	On timer:10sec.—180sec. Off timer:0.1sec.—30sec.	0.3—0.7	RKV/D/S60PA 6sets	390×220×450	13.0
HKE5200			200V Single phase				RKV/D80PA 4sets		
HKA5000	Indoor, Outdoor	IP54	Air Control				RKV/D100PA 4sets (per 1 system)	390×220×400	12.0