

FULL DETECTOR

Stable detection of upper limit in powder and bulk solid vessel!

The Full Detector is a strong level switch to detect an upper level of powder and bulk solid materials, and consists of a tilt detector and a transducer.

The tilt detector hung with a stainless chain in a vessel operates when the switch part tilts about 20° due to an increase of stored materials. The output relay in the transducer actuates when the tilt detector operates and then the time set with a built-in timer (1 to 10s) passes.

Since the aluminum alloy with higher intensity is used as case of Detector, the Full Detector is applicable even in the circumstances causing damage to general level switches.



AMDC-12C
Transducer



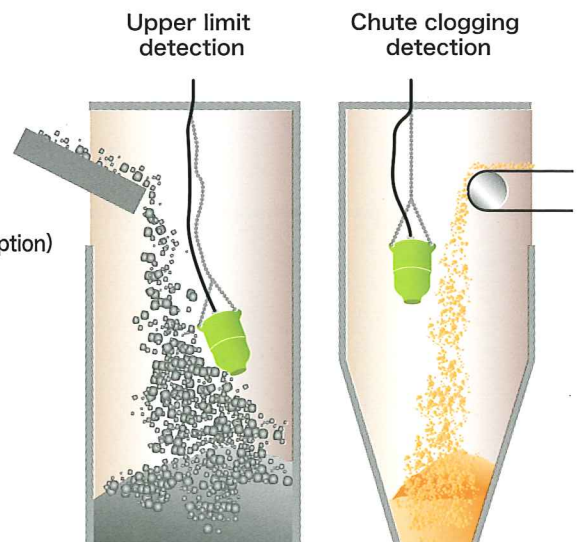
MFFC-20C
Detector

Features

- Simple and heavy-duty structure
- Wear-resistant
- Suitable for bulk and solid materials
- Suitable for powder with detection paddle (option)
- IP67 protection

Various Applications

- Clinker silo ●Coal/coke silo ●Gravel/sand silo
- Ore silo ●Cement silo ●Aggregate bin



Specifications

Detector

Type	MFFC-20C
Actuating Angle	about 20° (at angle of Detecting Weight)
Detecting Length	5m max. from hung point
Built-in Switch	VX-015-1A3 Microswitch
Type of contact	1C contact *1
Contact Capacity	125V AC0.1A 30V DC0.1A
Allowable Temperature	-15°C~+60°C (150°C *2)
Enclosure	IP 67
Detecting unit Coating color	MUNSELL 7.5GY 6/10
Terminal box Coating color	MUNSELL 5Y 7/1
Mass	5kg (Switch : 2.5kg)

Transducer

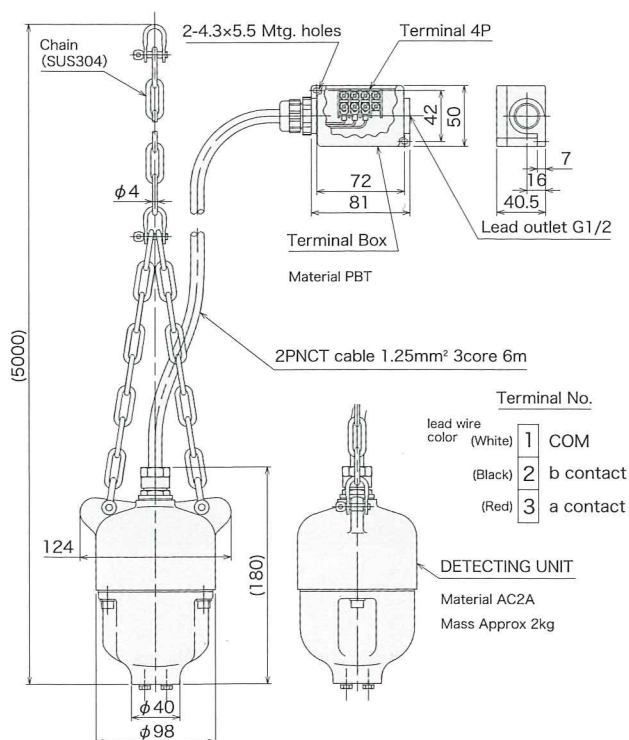
Type	AMDC-12C
Connection to detector	b contact (fail-safe type)
Output contact	1C contact
Capacity of contact	AC 250V 2A resistive
Timer	1~10s adjustable
Signal lamps	Power : Power supply Detect : Level detection
Allowable Temperature	-10°C~+50°C
Enclosure	IP 40
Power supply	AC100/110V, 200/220V, 50/60Hz
Mass	0.4kg

*1 For the combination with the old Transducer model AMDC-24, connection should be "a contact".

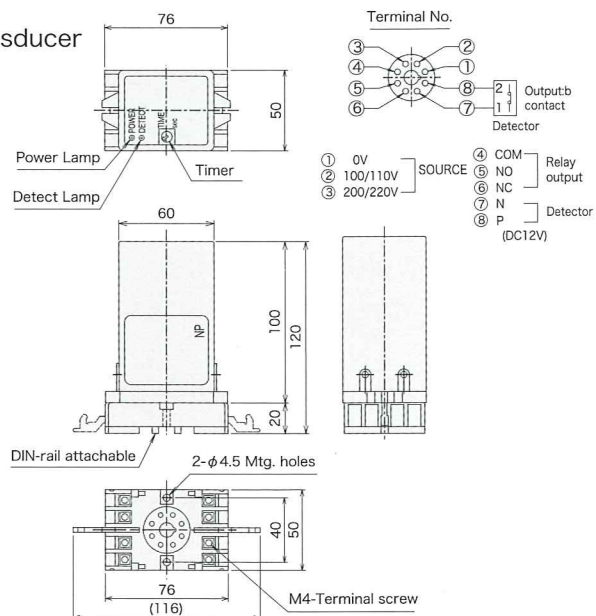
*2 High temperature type (option) *3 The intrinsically safe type is also available.

Dimensions mm

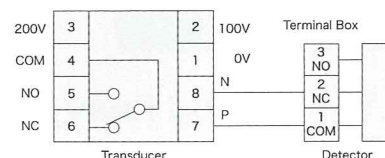
Detector



Transducer



Terminal



Caution
● Read the instructions to ensure correct and suitable application of products.
● Contact our nearest sales office when using our products for any systems used in situations which may be life threatening.

All Rights Reserved Copyright©2011, Matsushima Machinery Laboratory Co., Ltd.

Distributor



MATSUSHIMA

MACHINERY LABORATORY Co., LTD.

HEAD SALES OFFICE / FACTORY
461 Norimatsu, Yahatanishi-ku, Kitakyushu, 807-0831, Japan
Tel: 81-93-691-3731 Fax: 81-93-691-3735

TOKYO SALES OFFICE
Hohmest Funabashi Bldg., 3-36-28 Honcho, Funabashi, Chiba, 273-0005, Japan
Tel: 81-47-424-9901 Fax: 81-47-424-9905

NAGOYA SALES OFFICE
Tokiwasotodoi Bldg., 9-14 Sotodoicho, Atsuta-ku, Nagoya, 456-0013, Japan
Tel: 81-52-679-6301 Fax: 81-52-679-6305

OSAKA SALES OFFICE
Daihatsu Bldg., 2-2-40 Katamachi, Miyakojima-ku, Osaka, 534-0025, Japan
Tel: 81-6-6352-8011 Fax: 81-6-6352-8012
http://www.matsushima.co.jp E-mail: info@matusima.co.jp