

# Conductive LEVEL SWITCH

***MATSUSHIMA Conductive Level Switch is a reliable point level switch by the principle of weak current conduction, which applies weak current on electrode and detect the level when material touch with the electrode.***

- Failure-less system as there is no rotation or sliding portion
- Compact body applicable to plugged chute detection at small size chute
- No malfunction by rebound of filling material



MFIP-031W  
DETECTOR

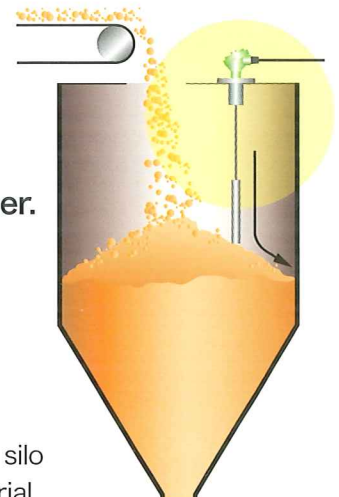
AMVC-300  
TRANSDUCER

## Features

- ❑ The Insulation hood prevents erroneous operation caused by clinging with dust.
- ❑ The Level Switch protects itself against noise with a built-in timer.
- ❑ The simple structure enables an excellent user-friendliness.
- ❑ The DETECTOR is strong, and long life.

## Various Applications

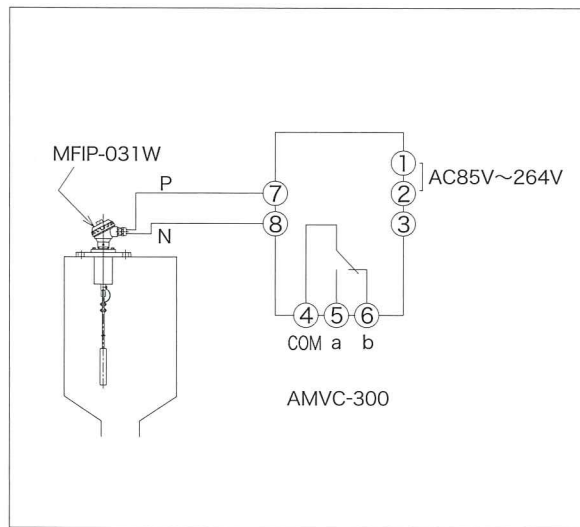
- Clinker silo
- Coal/coke silo
- Gravel/sand silo
- Ore silo
- Cement silo
- Aggregate bin
- Tripper piling silo/hopper
- Stacker Reclaimer piling material



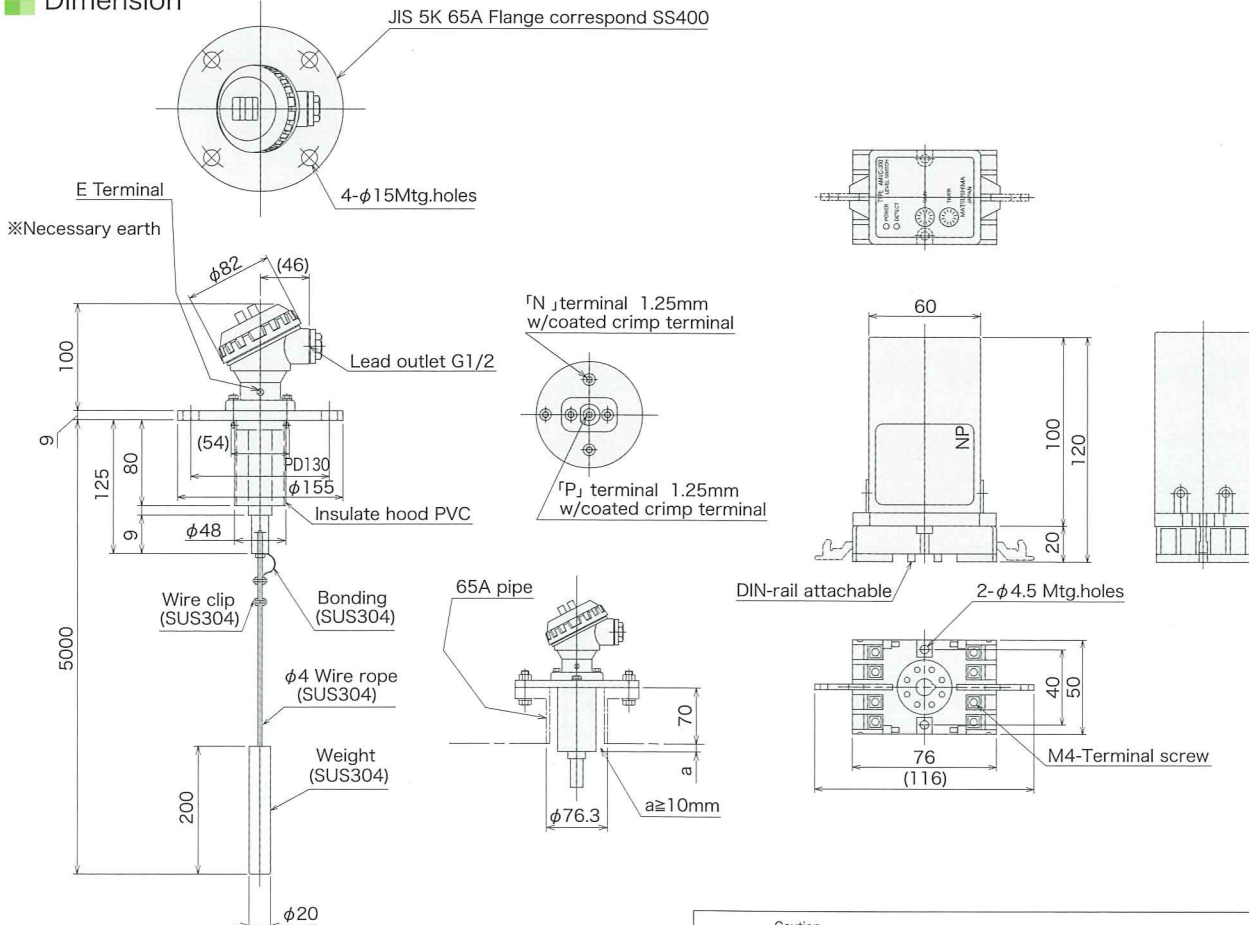
**Specifications**

Type	Detector MFIP-031W, Transducer AMVC-300
Probe length	5m (adjustable)
Power source	AC85V~264V 50/60Hz
Contacts	1 NONC for level detection
Contact capacity	250V AC 2A
Indicating lamps	Power lamp Detecting lamp
Sensitivity	0.05MΩ~10MΩ (between Detector and earth)
Timer	10 seconds
Temperature	Detector -20~+60°C Transducer 0~+40°C
Protection	Detector IP67, Transducer IP20
Weight	Detector 6kg, Transducer 0.4kg

**Connection diagram**



**Dimension**



**Caution**  
● Read the instructions to ensure correct and suitable application of products.  
● Contact our nearest sales office when using our products for any systems used in situations which may be life threatening.

All Rights Reserved Copyright©2010, Matsushima Machinery Laboratory Co., Ltd.

Distributor



**MATSUSHIMA**  
MACHINERY LABORATORY Co., LTD.

HEAD SALES OFFICE / FACTORY  
4-6-1 Norimatsu, Yahatanishi-ku, Kitakyushu, 807-0831, Japan  
Tel : 81-93-691-3731 Fax : 81-93-691-3735

TOKYO SALES OFFICE  
Hohmest Funabashi Bldg., 3-36-28 Honcho, Funabashi, Chiba, 273-0005, Japan  
Tel : 81-47-424-9901 Fax : 81-47-424-9905

NAGOYA SALES OFFICE  
Tokiwastodoi Bldg., 9-14 Sotodoicho, Atsuta-ku, Nagoya, 456-0013, Japan  
Tel : 81-52-679-6301 Fax : 81-52-679-6305

OSAKA SALES OFFICE  
Daihatsu Bldg., 2-2-40 Katamachi, Miyakojima-ku, Osaka, 534-0025, Japan  
Tel : 81-6-6352-8011 Fax : 81-6-6352-8012  
http://www.matusima.co.jp E-mail : info@matusima.co.jp